

Spalding Arts & Crafts Society

Founded 1916

Website: www.saacs.org.uk



NEWSLETTER - APR MAY JUNE 2018

**We meet on 1st Tuesday of the month
7:30pm at Pinchbeck Village Hall**

DEMONSTRATION DIARY

April 3rd 2018 - Jerome Hunt - Still life in Oil

May 1st 2018 - Stan Hurr - Pastel Portrait

June 5th 2018 - Peter Barker - Landscape in Oil

Contact SACS

Email:

SpaldingArtSociety@yahoo.co.uk or
phone Jon Healey on 01775 722433.

Website: www.SAACS.org.uk

Hi all. Jon Healey here. Spring is upon us. Time to restart your art. Here's how:

Get your paintings ready for our May exhibition at Ayscoughfee (see page 2)

Please pay your membership subscriptions (Page 2)

Get paintings ready to exhibit at the St Mary's Pinchbeck Flower Festival (Page 4)

Paint a Spring Challenge Still Life postcard for (page 3)

Volunteer to help at a SACS monthly meeting.

Look at our revamped website (www.SAACS.org.uk)

Send in your contributions for our on-line members gallery to Katie.

Send in an article for the next newsletter. Send your contribution to me at jonhealey@ymail.com, by 20th June for the Summer issue.

- Demo Diary
- Our AGM
- SACS May Exhibition
- Membership subs due
- NEC Shows Report
- Painting at Springfields
- SACS Spring Challenge
- Demo Reports
- Pinchbeck Art Exhibition
- SACS at the Hub

Spalding Arts & Crafts Society 2018 Annual General Meeting



The AGM of Spalding Arts & Crafts Society was held on 7th March 2018 at 7pm. The following Members were voted into post:

President: Veronica Pryke, Chairman: vacancy, Vice-Chairman: Jon Healey, Treasurer/Membership Secretary: Ann Dring, Demonstration Secretary: Denise Prew, Publicity Secretary: Maggie Goodsell, Secretary: Liz Wellings, Exhibition Secretary: Sue Mcwhinnie . Committee Members: Katie Stanney (Website), Gill Harker (Meet & Greet), Donna Halftack (Raffle).

Sadly our Chair for the past three years, Mo Teeuw has stepped down due to extensive travelling, teaching and exhibiting commitments. We thank her for a massive contribution to our society and hope to see her at future meetings.

SACS Annual Exhibition at Ayscoughfee Hall 2nd to 31st May 2018

As we have no Exhibition Secretary there is a change to the entry process this year. There will be no entry form issued prior to handing-in day for you to post back. An information leaflet will be emailed out along with a form for you to bring on the day. To exhibit you must have paid your subscription for the current year - you can pay on handing-in day if necessary !!

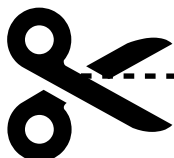
Members need to turn up at Ayscoughfee on the 2nd May between 10.30 - 11.30 am with their paintings, a list of their entries (including prices and a contact phone number) and the entry fees. The charges are £2 per painting (max 3 paintings) and £1 per painting for the browser. Paintings should be no more than 24" on any one side including frames. Because of the hanging system in Ayscoughfee paintings **must** be strung using D rings.

When pricing your work please remember to allow for 20% commission. The society only gets a small part of this - the bulk goes to Ayscoughfee. This is not as unreasonable as it sounds as the venue is free and they process all sales which means the exhibition doesn't have to be stewarded - giving us all time to do more painting.

On arrival you will be given a display card to fill in for each painting. This card should state your name, the title of the painting, the medium and price. Although it is preferred that all paintings are original work, if your painting is a copy of another artist's painting please also state this. This is usually written as 'after' then the artists name.

Please ensure that there is a label firmly attached to the back of the painting with your name and the painting title. The Preview will be on Saturday 5th May between 1.30 - 3.30 pm- subject to confirmation by Ayscoughfee. Please ask your friends and neighbours to join us.

Paintings must be collected on the 31st May between 10.30 and 11.30 am. If you cannot collect your paintings in person, please ask someone else as the committee cannot be held responsible for uncollected paintings.



Membership Subscriptions are due NOW. Please use the form below to send your remittance.

SPALDING ARTS AND CRAFTS

REMITTANCE ADVICE SLIP 2018

Name

Address

E-mail

Send me my Newsletter by email

Membership fees due on 1st April are £15 individual and £22.50 for dual membership

Please send cheque to Mrs Ann Dring, Westfield Farm, Beck Bank, West Pinchbeck PE11 3QN **OR** Pay on-line to Spalding Arts and Crafts Society Nat West Account no 07533853 Sort Code 55-50-36 using your name as the reference. **OR** by Cash Or Cheque at a monthly demonstration.

Three Shows at the NEC Birmingham by Maggie Goodsell

In March I again visited the three craft and sewing shows - Creative Crafts, Sewing for Pleasure and Fashion & Embroidery at the NEC on the annual coach trip organised by Janet Jaggs & Liz Reynolds.

Well worth a visit just to look at the amazing array of sewing and crafting projects by students, craft groups and designers.

Sadly I missed the students fashion show this year as I ran out of time - shopping and chatting to the many exhibitors eats into the hours.

I hadn't intended to buy much whilst there but when assailed with such a plethora of supplies the temptation proved too great and yet again I returned with more than planned !!



Painting at Springfields

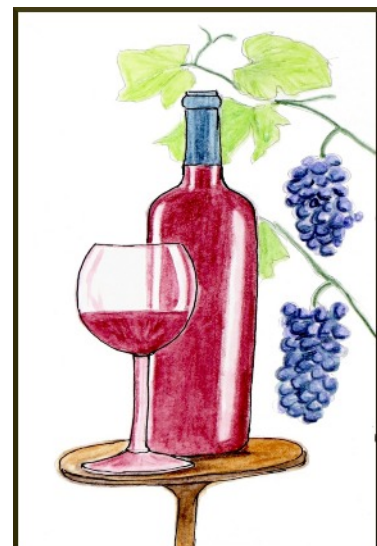
We have been invited to paint as a group in the gardens at Springfields. Anyone interested in taking part please contact Maggie at publicity@saacs.org.uk. Once we know there are enough people interested suitable dates will be set when the gardens are at their most attractive.

SACS Spring Challenge

This year the Spring Postcard Challenge is a Still Life.

Postcards must be 6" x 4" portrait format painted in either watercolour or acrylic on paper or card. Please sign your painting, put it in an envelope with your name on and state whether you would like it returned. Unclaimed entries will be offered for sale at future exhibitions with the proceeds going to the society funds.

This is not a competition, it is just to show the wide talent of the members of the society and all entries will be on display at our Annual Exhibition in May. Entries must be with Maggie Goodsell by the 1st May.



Welland Print

If you have problems printing a decent image for entry into competitions we understand that Welland Print will do one for you from your digital image at the very reasonable cost of 50p. Please contact Jenny at Welland Print on 01775 764920 or jennie.brawls@wellandprint.com.

Monthly Demonstrations Report by Maggie Goodsell

Visit the Society blog for photos and details about the demonstrations - look for SACS News on the website. When a report is posted on the blog a direct link is also posted on our Facebook page.

<http://saacsnews.saacs.org.uk/#home>

January

No meeting in January

February

Peter Wood came from North Lincolnshire to give us an interesting acrylic demonstration of a French Street Café. He also filmed the demo - links to it on Youtube can be found in the report on the blog.

March

Stephen Martyn came to do a Norfolk Scene using a limited watercolour palette. He gave us an excellent demonstration of a view of Cley Mill using just French Ultramarine Blue and Brown Madder.



St Marys, Pinchbeck Flower Festival Art Exhibition 1st - 7th May 2018

SACS is one of the Spalding Group of Art Societies invited to show paintings at this event. Entry forms are available from Jon Healey (jonhealey@ymail.com) and can be returned to him at the next meeting, 3rd April. The final cut off for entries is 20th April.

Up to three paintings can be exhibited. The entry fee is now £1 per painting and sales commission of 10% will be deducted for church funds. Set up is between 2 pm and 5:15pm on Tuesday 1st May and the exhibition runs until Monday 7th May. Collect your unsold work on the afternoon of Monday 7th. It is hoped that you will steward at least twice during the exhibition. Details are on the application form.

SACS Painting Together At The Hub

A group of SACS members meet on the third Tuesday of the month at the Pinchbeck Community Hub and Library, 48 Knight Street PE11 3RU, to paint together.

The Self-help sessions run from 1:30 until 4 pm. The next three dates for your diary are Tuesday 17th April 2017, 15th May and 19th June. More details from Ann Dring on 01775 640255 or 07946 751909 or email ann.dring@talk21.com or just turn up. The cost is £3 for members, £4 for guests. See you there.